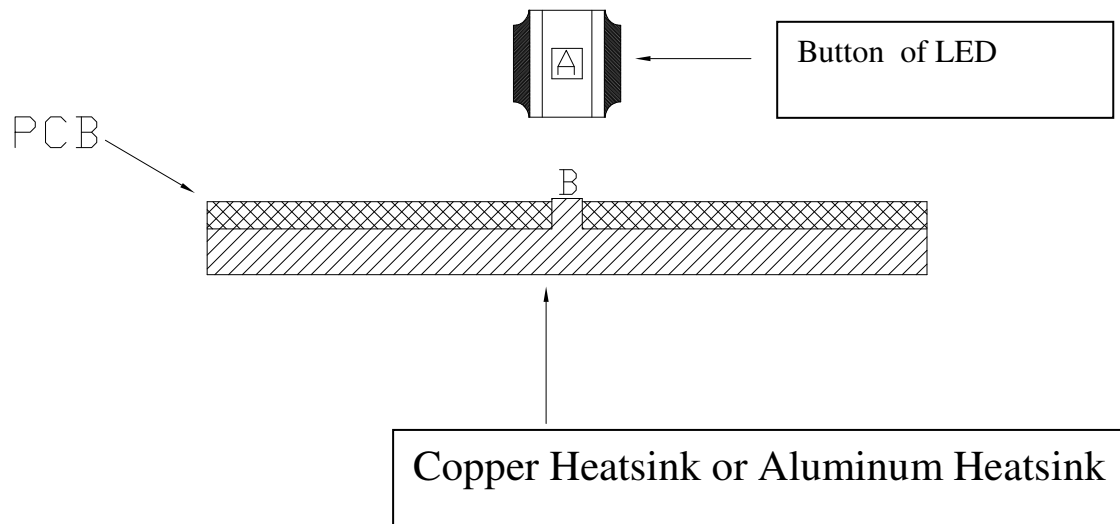




COOLTECH Ceramic LED Series recommended PCB and Heatsink Structure



- 1) Region A is the specify Silver Pipe of the Ceramic LED
- 2) Both Copper or Aluminum are suitable for the Heatsink material.
(Nickel electroplating is must on the Heatsink surface)
- 3) Both Cathode and Anode must need to layer out on PCB layer.
- 4) Solder Region A on LED and Region on the Heatsink together by solder paste
- 5) Recommended heatsink surface area should not less than 20 x 20mm.

Notes :

The about suggestion is for 1W Ceramic LED.

For 3W Ceramic LED, recommended heatsink surface area should not less than 20 x 20mm.

Different material thickness of the heatsink

Copper: 0.5mm

Aluminum: 1mm