

LED Lighting Rope

User Manual

WW-LRF30XX2W-220

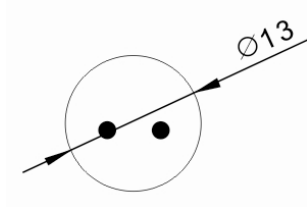
WW-LRF30XX3W-220

WW-LRF30XX4W-220



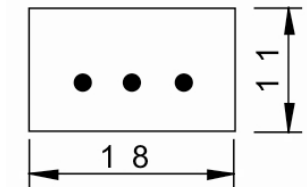
Product Dimension

LED Lighting Rope 2 Wires Series (WW-LRF30XX2W-220)



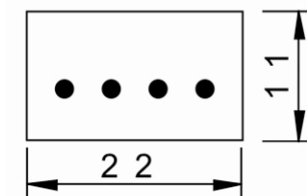
Unit Length	Watt per Meter	Dimension
1m	1.65W/m	$\varnothing 13\text{mm}$

LED Lighting Rope 3 Wires Series (WW-LRF30XX3W-220)



Unit Length	Watt per Meter	Dimension
1m	3.3W/m	11*13mm

LED Lighting Rope 4 Wires Series (WW-LRF30XX4W-220)



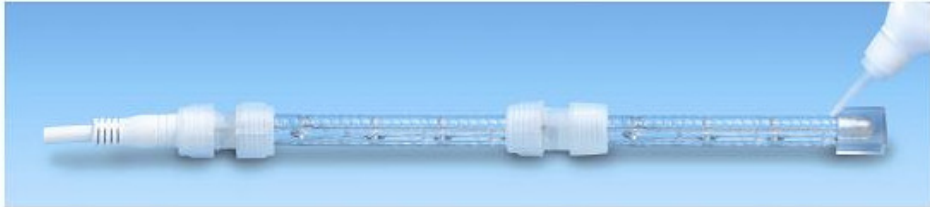
Unit Length	Watt per Meter	Dimension
1m	4.95W/m	11*22mm

Standard Package: 20m, 50m
Maximum Length in series: 100m

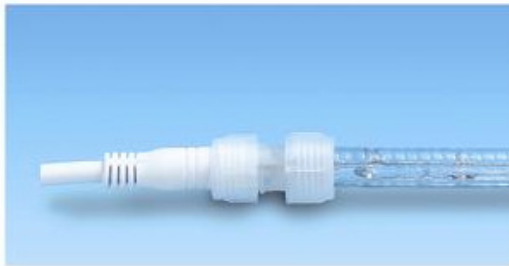
Installation

1. Find the nearest cutting mark on the product you wish to cut.

2. Cut the product at the cutting mark only.



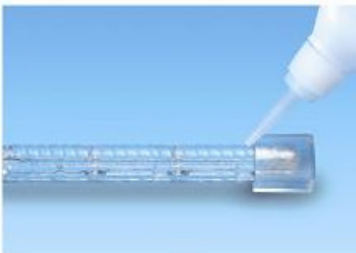
3. Install the Front Connector (WW-FLS-2W-FR-A) by attaching it to the pin and inject the waterproof material to complete the waterproof function.



4. Attach the two ropes by connecting the splicing connector (WW-FLS-2W-ML-A).



5. Install the End Cap (WW-FLS-2W-ER-A) and inject the waterproof material to complete the waterproof function.



Cautions

- Don't connect the chain to the supply while it is in the packing.
- Don't connect this chain electrically to another chain
- The LED lamps are not replaced.
- The external flexible cable of the luminaries cannot be replaced; if the cord is damaged, the luminaries shall be destroyed.
- Never hit the lighting body with hard objects and never cover it with anything heavy during the installation or its use.
- Make sure that the voltage marked on power supply switching is corresponding to the usage voltage of LED Lighting Rope, and that the security device is set accordingly.
- To ensure safety LED Lighting Rope should be installed by a qualified engineering technician.
- Do not apply power to LED Lighting Rope during the connecting process.
- To ensure the lighting body work well, you must fasten the LED Lighting Rope well during installation.
- Never hit the lighting body.
- To prevent the water seepage into the lighting body.
- Never submerge LED Lighting Rope in any liquid substance and never put it in a fire since this will damage the environment

